

**HALSCO[®]
SAFES**

GUARANTEED
TO GIVE YOU
**PEACE OF
MIND**



PRODUCT CATALOGUE
2012

HALSCO SAFES

ABOUT US

Halsco branded products have been a mark of high quality door hardware security for over 40 years, with products ranging from grade 3 light duty residential to commercial grade 1 hardware. New high quality Halsco safes have been added to our extensive product line which offer an array of B-rated, UL fire rated protection and UL residential security container classifications in accordance with Underwriters Laboratories. Various types of safes are available in many sizes with the option of mechanical or electronic dials.

Our dedicated customer service is prepared to answer any general or technical questions you may have and help you find the right Halsco safe solution to meet your needs. We are sure once you have tried our safes, you will agree that, Halsco safes guarantee to give you peace of mind.

Table of Contents

ECONOMY FIRE SAFES Compact sized fire resistant safes	
Features and Benefits	2
Photos & Specifications	3
BURGLARY & FIRE SAFES Anti-burglary & fire resistant safes	
Features and Benefits	4
Photos & Specifications	5
DEPOSITORY SAFES Front loading depository safes	
Features and Benefits	6
Photos & Specifications	7
UNDER COUNTER-SLOT SAFES	
Features and Benefits	8
Photos & Specifications	9
IN-FLOOR SAFES	
Features and Benefits	10
Photos & Specifications	11
WALL SAFES	
Features and Benefits	12
Photos & Specifications	13
PARTS & ACCESSORIES	14,15
UL Labels, Certificates & Classifications	16



ECONOMY FIRE SAFES

Compact sized fire resistant safes

Halsco UL listed home and office fire safes, offer superior fire protection for valuables and important documents.

The EM/ES compact sized fire resistant safes are equipped with a two user electronic safe lock, allowing you to easily open the safe and change the combination all from the keypad.

Anchoring hardware and the safe lock batteries are included with each model.

Halsco Economy Fire Safe series exemplifies superior protection of home and business needs at an affordable price.

Features

- High security, fire-resistant safes with attractive and compact design
- UL listed fire protection, Class 350 degree 1hr, ensuring your important documents remain intact in the event of a fire (EM/SM-020 & ES/SS-031D safes).
- Two hefty 16 (5/8") solid chrome plated locking bolts
- One stationary locking bolt on hinge side to deter prying attack on hinges
- Convenient plastic tray (+ adjustable shelf for model 031D)
- Pre-drilled anchor hole
- Anchoring hardware & 4 batteries included
- Door thickness: 2 1/2"
- Finish: Dark Grey Door & Body

Lock Options

- EM/ES- Electronic Lock
- SM/SS- Non Changeable Combination Lock + Key Lock

Certificates

UL 72 CLASS 350 - 1 hr

ECONOMY FIRE SAFES

Compact sized fire resistant safes



Model
ES-031D



SM/SS-Non Changeable Combination
Lock + Key Lock option



Model
EM-015



Model
EM-020



Model		Outside			Inside			Weight	Tray/Shelf
		H	W	D	IH	IW	ID		
EM-015	SM-015	11 5/8"	15 3/8"	12 1/2"	8 1/4"	12"	8 3/8"	59lbs	1 / 0
EM-020	SM-020	13 1/2"	16 3/4"	15 1/4"	9 1/2"	12 3/4"	10 3/8"	92lbs	1 / 0
ES-031D	SS-031D	20 3/8"	16 1/8"	17 1/2"	16 1/4"	12"	12 1/2"	132lbs	1 / 1

BURGLARY & FIRE SAFES

Anti-burglary & fire resistant safes

Halsco SB series high security safes provide UL RSC listed premium burglary and fire protection. The burglary protection consists of a 2" thick door and 3" thick body with 2-3 stationary locking bolts on the hinge side, and an independent glass re-locking device as a standard features.

In the event of an attack by drilling, the glass will shatter activating the re-lock mechanism.

Advanced barrier materials and fire protection have earned the SB series safes both the highly coveted UL RSC Residential Security Container burglary rating and the UL Class 350 degree F, 1 hour fire rating (SB-01C/01E & SB-02C/02E models). Providing you with the peace of mind your valuables will remain safe and secure at all times.

All SB series safes come standard with unique, easy release removable wheels. This is beneficial when moving and installing heavy safes.

Halsco burglary & fire safes offer premium quality, advanced barrier technology, value and UL listed protection, making them a number 1 choice among discriminating consumers.

Features

- UL Listed Burglary and Fire protection (UL 1037 RSC, UL Class 350 1hr.)
- Advanced barrier material to deter theft
- Heavy duty construction – 2" thick door and 3" thick body
- Independent glass re-locking device
- Massive active locking bolts and three stationary locking bolts on hinge side to deter prying attack on hinges
- 3 spoke chrome-plated vault handle
- Reinforced composite body
- Pre-drilled anchor hole
- 4 removable wheels supplied
- Anchoring hardware included
- Finish: Dark Grey Door & Body

Lock Options

- C-UL Listed Group II Sargent and Greenleaf safe mechanical safe lock
- E-Electronic Lock- Lagard-Basic-II (Models SB-01E/SB-02E)

Certificates

UL 1 hr 350 degree F (SB-01C/01E & SB-02C/02E models)
UL 1037 RSC (all models)

BURGLARY & FIRE SAFES

Anti-burglary & fire resistant safes



Model	Outside			Inside			Weight	Shelf	UL 1 hour	UL RSC
	H	W	D	IH	IW	ID				
SB-01E SB-01C	18"	17 3/4"	20 1/2"	11 3/4"	12"	12 5/8"	165 lbs	1	*	*
SB-02E SB-02C	27 3/8"	20 1/4"	20 1/2"	21"	14 1/4"	12 5/8"	370 lbs	2	*	*
SB-03C	33 1/2"	20 1/4"	22 7/8"	27 1/4"	14 1/4"	14 7/8"	607 lbs	2		*
SB-04C	33 3/8"	28 1/8"	29"	27 1/2"	22 1/4"	21 1/8"	792 lbs	2		*
SB-05C	41 5/8"	28 1/8"	29"	35 1/2"	22 1/4"	21 1/8"	924 lbs	2		*
SB-06C	59 1/4"	28 1/8"	29"	53 3/4"	22 1/4"	21 1/8"	1056 lbs	3		*

**The SB safe glass re-lock device is only activated once the pull/pin is removed.

DEPOSITORY SAFES

Front loading depository safes

Halsco Depository safes are ideal for immediate deposits and for securing storage of cash or other valuables when needed.

All Halsco depository safes are "B" rated burglary construction and have 1/2" solid steel doors & 1/4" solid steel bodies. Halsco depository safes are ideal for temporary cash storage situations.

Halsco Depository safes offer reliable and economical protection and are easier to manoeuvre than competitive brands with excessive weight.

Features

- B-rated burglary construction (1/2" solid steel door and 1/4" solid steel body)
- Front loading deposit door with anti-fish baffles
- All sides seamlessly welded
- Safe lock protected with advanced drill resistant steel hard plate
- Three-way bolt work with independent relocking device (S752C/S782CC safes)
- Full length locking bar to deter prying attack on hinges
- 4 pre-drilled anchor holes
- Anchoring hardware is included
- Front Loading Capacity- (S747C)-H-4 5/7"x W-11 3/7" (S752C) H-4 5/7"x W 13" (S782CC) H-4 5/7"x W 13"
- Finish: Dark Grey Door & Body

Lock Options

C-UL Listed Group II Sargent and Greenleaf mechanical safe lock

DEPOSITORY SAFES

Front loading depository safes



Model
S752C



Model
S747C



Model
S782CC

Model	Outside			Inside			Weight	Front Loading Size		Door	Lock Bolt
	H	W	D	IH	IW	ID		H	W		
S747C	18 1/4"	15"	10 1/4"	9"	14 1/2"	7 1/2"	88lbs	4 3/4"	11 1/2"	1	3
S752C	20"	15 3/4"	15 3/4"	11"	15 1/4"	14 1/2"	147lbs	4 3/4"	13"	1	3
S782CC	32 1/8"	15 3/4"	15 3/4"	23"	15 1/2"	14 3/8"	187lbs	4 7/8"	13"	2	3

UNDER COUNTER-SLOT SAFES

Halsco Under Counter-Slot Safes are a convenient and safe way to protect money when immediate deposit of cash or checks is required. These safes allow for multiple deposits to be made through the anti-fish deposit slot.

These safes are commonly used under counters in retail environments (ie: gas stations, retail stores, athletic clubs & food establishments) due to limited space and the need to reduce the threat of robbery and/or internal theft.

Features

- B-rated burglary construction (1/2" solid steel door and 1/4" solid steel body)
- Ease-of-use : Deposits are made through the deposit opening or slot (money bag/envelopes), no need to unlock the door
- Deposits protected with anti-fish baffles
- All sides are seamlessly welded
- Armed with drill resistant steel hard plate construction
- Full length locking bar to deter prying attack on hinges with independent re-locking device
- 4 anchor holes in the bottom include d
- Front Loading Capacity is H-5 1/8"x W-1/2"
- Finish-Dark Grey Door & Body

Lock options

C-UL Listed Group II Sargent and Greenleaf mechanical safe lock

UNDER COUNTER-SLOT SAFES



Model
MS-1D



Model
MS-1D
(Pictured open)

Model	Outside			Inside			Weight	Slot Size		Door	Lock Bolt
	H	W	D	IH	IW	ID		H	W		
MS-1D	12"	6"	8"	10"	5 1/2"	5 5/9"	34lbs	1/2"	5 1/2"	1	Slot

IN-FLOOR SAFES

The Halsco FS series of In-Floor Safes, are designed to conceal and secure miscellaneous valuables and documents, without others' knowing the safes location. Proper Installation of this safe is below floor level, in concrete. A steel dust cover is included for flush floor installation and concealment. Virtually impossible to be removed if installed correctly.

Features

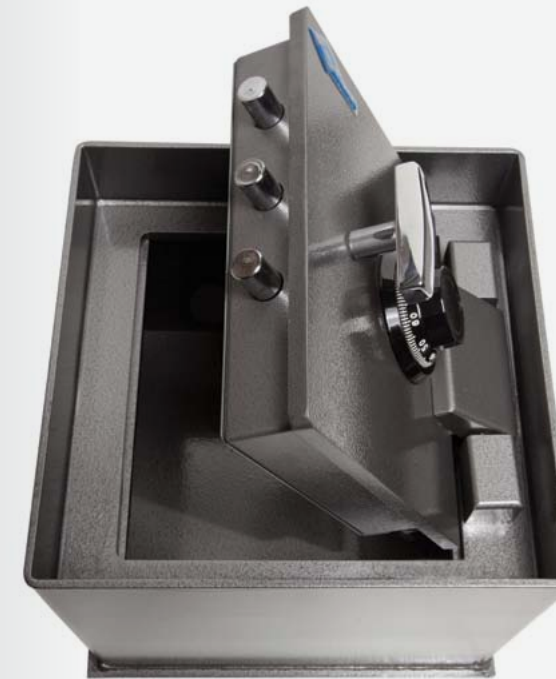
- In-floor safe designed for installation in concrete
- B-rated burglary construction (1/2" solid steel door and 1/4" solid steel body)
- Heavy duty hinges (Coil spring makes it easy to open and close the door)
- All sides seamlessly welded
- Armed with drill resistant steel hard plate construction
- Hefty solid chrome plated locking bolt with independent re-locking device
- Full length locking bar to deter prying attack on hinges
- Steel dust cover included for flush floor installation and concealment
- 9" X 11" door opening
- 2 Sizes Available
- Finish: Dark Grey Door & Body

Lock options

C-UL Listed Group II Sargent and Greenleaf mechanical safe lock

IN-FLOOR SAFES

HALSCO SAFES



Model
FS-B1



Model
FS-B2

Model	Outside			Inside			Weight
	H	W	D	IH	IW	ID	
FS - B1	12 3/8"	14"	14"	7 1/4"	13 1/2"	13 1/2"	112lbs
FS - B2	16 1/4"	14"	14"	11"	13 1/2"	13 1/2"	132lbs

WALL SAFES

Halsco Wall Safes are designed to provide hidden protection for personal documents or valuables in closets, behind wall hangings or tapestries. Consideration has been given for easy installation of these safes, allowing for simple retrofit between standard wall studs. These safes have 4" depths, which fit within a standard wall thickness.

The quality and discreet nature of these safes, offer one a sense of confidence and security knowing that their valuables are well protected and that they are easily accessible when required.

Features

- Hidden hinges and a removable shelf
- Depth can be adjusted according to customer preference
- Hefty 3/4" solid chrome plated locking bolts
- High security dimple key which retracts the bolts
- 1/4" thick solid steel door & 1/16" thick solid steel body
- EW-01M-Flange- H-13 7/8", W-16 5/8" EW-02M-Flange- H-9 1/16", W-14 3/16"
- Installation hardware included
- Finish: Dark Grey Door & Body

Lock options

EW - Non-LCD Electronic Lock + Key lock

WALL SAFES

HALSCO SAFES



Model
EW - 01M



Model
EW - 02M

Model	Outside			Inside			Weight	Shelf
	H	W	D	IH	IW	ID		
EW - 01M (4")	12 1/8"	14 1/2"	4"	11 15/16"	14 1/4"	3 7/8"	26lbs	1
EW - 02M (4")	8 1/2"	13 9/16"	4"	8 1/2"	13 1/2"	3 7/8"	20lbs	1

PARTS & ACCESSORIES

SM/SS-CUT KEY#523

Cut keyblank for SM/SS series safes



EW-01M/02M-CUT KEY#23

Cut keyblank for EW-01M/02M series safes



SB-GLASS RELOCK

Replacement Glass for SB series safes



SG-6120-305

Replacement Sargent and Greenleaf round electronic keypad, UL listed, satin chrome for SB, FS Series and S752 safe models

Features

- One million codes to choose from.
- One master code and eight user codes.
- Capable of a management reset code.
- Programmable time delay of one to nine minutes can easily be activated from the keypad.
- Penalty lockout feature shuts the lock down for five minutes if four or more incorrect codes are entered in a row to deter random code entry attempts.
- All programming is accomplished via the keypad; no special programming tools required.
- Uses S&G's Magic Module® footprint to match the mounting dimensions of most mechanical and electronic safe locks.
- Two 9 volt batteries are included.



PARTS & ACCESSORIES

SG-6730-100-KIT

Replacement Changeable Combination Dial for SB,FS,MS and S Series Safes

Features

- Three combination wheels for 1,000,000 possible combinations.
- Patented S&G torque adjuster enhances security by maintaining proper wheel pack tension.
- Integral relock trigger thwarts punch attacks.
- Brass four-way drive cam allows mounting RH, LH, VU, or VD.
- Metal wheels (brass and aluminum) for long, dependable life.
- Brass lever.
- Uses S&G's Magic Module® footprint to match the mounting dimensions of most mechanical and electronic safe locks.



LG-Basic II-E-Lock

Replacement Lagard LG Basic electronic lock, UL listed, satin chrome, swingbolt for SB, FS and S752 series safe models

Features

- Two user electronic safe lock-manager can add/delete or enable/disable additional user.
- Wrong try penalty.
- Low battery signal.



UL Labels, Certificates & Classifications

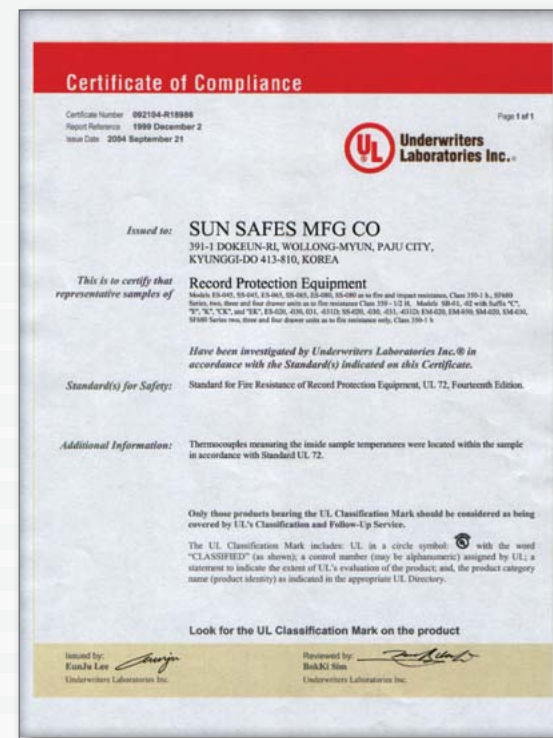
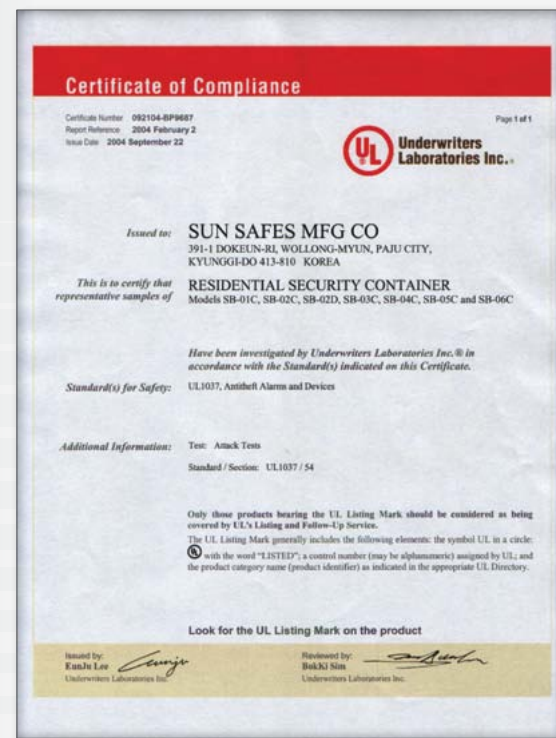
UL 1037 RSC (Residential Security Container)

A UL 1037 RSC rated safe is a designation given by the Underwriters Laboratories to safes with the ability to withstand 5 full minutes of rigorous prying, drilling, punching, chiseling, and tampering attacks by UL technicians.



UL 72 Fire protection, Class 350 degree 1hr.

A UL 72 Class 350 1 Hour rated safe is the most widely recognized industry standard for commercial quality fire safes. This rating is given when a safe demonstrates an internal temperature that does not exceed 350 degrees F for up to 60 minutes even when exposed to external temperatures of over 1700 degrees. Safes with this "records protection equipment rating" are meant to store only paper documents and files.



NOTES

HALSCO SAFES

**HALSCO[®]
SAFES**



www.halscosafes.com

